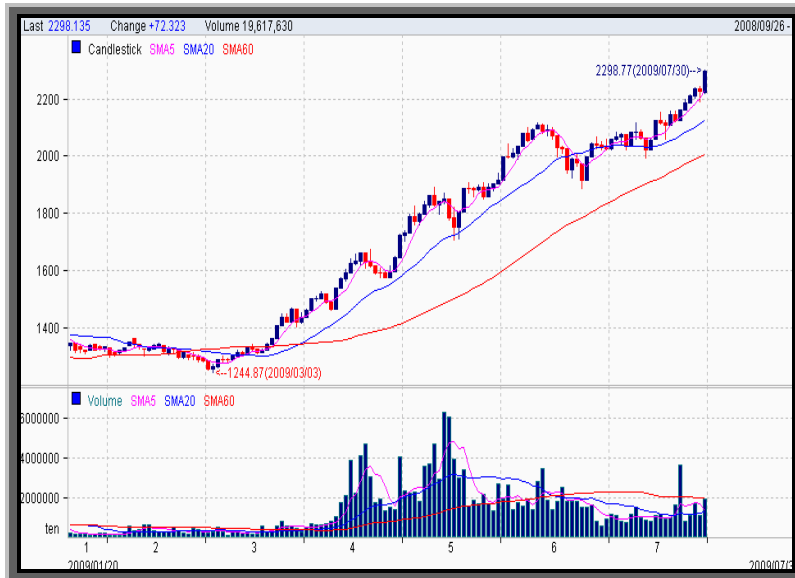




MARKET VIEW

COMPOSITE INDEX



Source: HOTS

Pada perdagangan kemarin, IHSG ditutup menguat hingga 72,323 poin (3,25%) ke level 2.298,135. Indeks LQ 45 juga menguat 14,811 poin (3,40%) ke level 450,909. IHSG kini berada pada posisi tertinggi sejak 31 Juli 2009, saat IHSG ditutup di level 2.304.

Pelemahan IHSG kemarin seiring dengan Bursa-bursa regional yang juga sedang dilanda euforia. Indeks Nikkei-225 ditutup menguat 51,97 poin (0,51%) ke level 10.165,21, yang merupakan level tertinggi sejak 10 bulan terakhir. Bursa Tokyo diserbu aksi beli didorong sentimen positif data produksi industri dan laporan keuangan yang positif dari perusahaan. Sedangkan Indeks Hang Seng ditutup juga menguat 98,58 poin (0,49%) ke level 20.234,08. Indeks KOSPI menguat tipis 10,42 poin (0,70%) ke level 1.534,74.

Perdagangan di seluruh pasar BEI sangat semarak, dengan frekuensi mencapai 149.491 pada volume 9.808 juta lembar saham senilai Rp 7,013 triliun. Sebanyak 161 saham naik, 55 saham turun dan 56 saham stagnan.

Hari ini kami perkirakan IHSG akan bergerak pada kisaran :

Support : 2188,37
 Resistance : 2349,52

STOCK PICK

Ticker	Supp.	Resis.	Rekomen	Target Terdekat	Stop Loss	Remark
INDF	2,208	2,508	Speculative Buy	2,417		Psicological Line naik
BBCA	3,683	3,833	hold	3,792		Psicological Line naik, Volume Besar, Stochastic Crossing Ke Bawah
BUMI	2,233	2,833	Bow	2,642		Psychological Line naik, Volume Besar, Tren Positif
BMRI	3,767	4,267	Speculative Buy	4,108		Psicological Line naik, Volume Besar, Stochastic Slow Crossing Ke Bawah
BBRI	7,150	8,050	Bow	7,750		Psicological Line naik, Volume Besar
TINS	2,025	2,175	Hold	2,125		Stochastic melemah, Trend ADX melemah
TLKM	8,983	10,283	Bow	9,867		Trend ADX menguat, Psicological Linne Naik, Volume Besar

Source: Asia Securities Research
 Stock Pick berdasarkan Analisa Teknikal
 BoW: Buy on Weakness



TECHNICAL INDICATOR (LQ45 & IHSG)

CODE	Closing	S3	S2	S1	PIVOT	R1	R2	R3	Daily Trend
AALI	19,100	18,450	18,600	18,850	19,000	19,250	19,400	19,650	bullish
ADRO	1,260	1,177	1,193	1,227	1,243	1,277	1,293	1,327	bullish
AKRA	860	780	800	830	850	880	900	930	bullish
ANTM	2,125	1,958	1,992	2,058	2,092	2,158	2,192	2,258	bullish
ASII	28,100	26,433	26,767	27,433	27,767	28,433	28,767	29,433	bullish
BBCA	3,725	3,608	3,642	3,683	3,717	3,758	3,792	3,833	bullish
BBNI	1,880	1,687	1,733	1,807	1,853	1,927	1,973	2,047	bullish
BBRI	7,450	6,700	6,850	7,150	7,300	7,600	7,750	8,050	bullish
BDMN	4,725	4,525	4,575	4,650	4,700	4,775	4,825	4,900	bullish
BISI	1,930	1,823	1,857	1,893	1,927	1,963	1,997	2,033	bullish
BLTA	830	780	790	810	820	840	850	870	bullish
BMRI	3,925	3,517	3,608	3,767	3,858	4,017	4,108	4,267	bullish
BNGA	700	637	653	677	693	717	733	757	bullish
BNII	430	415	420	425	430	435	440	445	bullish
BRPT	1,330	1,250	1,270	1,300	1,320	1,350	1,370	1,400	bullish
BUMI	2,425	1,933	2,042	2,233	2,342	2,533	2,642	2,833	bullish
BYAN	5,500	5,333	5,367	5,433	5,467	5,533	5,567	5,633	bullish
CPIN	890	810	830	860	880	910	930	960	bullish
CTRA	850	787	803	827	843	867	883	907	bullish
ELSA	350	312	323	337	348	362	373	387	bullish
INCO	4,175	3,942	4,008	4,092	4,158	4,242	4,308	4,392	bullish
INDF	2,300	2,058	2,117	2,208	2,267	2,358	2,417	2,508	bullish
INDY	2,375	2,175	2,225	2,300	2,350	2,425	2,475	2,550	bullish
INKP	1,790	1,743	1,757	1,773	1,787	1,803	1,817	1,833	bullish
INTP	9,100	8,300	8,500	8,800	9,000	9,300	9,500	9,800	bullish
ISAT	5,400	5,233	5,267	5,333	5,367	5,433	5,467	5,533	bullish
ITMG	25,250	22,967	23,483	24,367	24,883	25,767	26,283	27,167	bullish
JSMR	1,650	1,603	1,617	1,633	1,647	1,663	1,677	1,693	bullish
KLBF	1,340	1,243	1,267	1,303	1,327	1,363	1,387	1,423	bullish
LPKR	710	667	683	697	713	727	743	757	bearish
LSIP	6,850	6,267	6,383	6,617	6,733	6,967	7,083	7,317	bullish
MEDC	3,275	2,992	3,058	3,167	3,233	3,342	3,408	3,517	bullish
MIRA	530	500	510	520	530	540	550	560	bullish
PGAS	3,350	3,225	3,250	3,300	3,325	3,375	3,400	3,450	bullish
PNBN	750	717	723	737	743	757	763	777	bullish
PTBA	13,350	11,967	12,283	12,817	13,133	13,667	13,983	14,517	bullish
SGRO	1,770	1,703	1,717	1,743	1,757	1,783	1,797	1,823	bullish
SMCB	1,450	1,303	1,337	1,393	1,427	1,483	1,517	1,573	bullish
SMGR	5,900	5,533	5,667	5,783	5,917	6,033	6,167	6,283	bearish
TBLA	320	295	300	310	315	325	330	340	bullish
TINS	2,075	1,950	1,975	2,025	2,050	2,100	2,125	2,175	bullish
TLKM	9,400	8,333	8,567	8,983	9,217	9,633	9,867	10,283	bullish
UNSP	770	640	670	720	750	800	830	880	bullish
UNTR	12,450	10,983	11,317	11,883	12,217	12,783	13,117	13,683	bullish
UNVR	11,900	11,267	11,433	11,667	11,833	12,067	12,233	12,467	bullish
WIKA	355	333	342	348	357	363	372	378	bearish
IHSG	2,288	2,158	2,188	2,238	2,268	2,318	2,349	2,399	bullish

Source: Asia Securities Research

Panduan:

1. Bila harga OPEN pada perdagangan hari ini lebih besar (kecil) daripada nilai PIVOT, maka terdapat kemungkinan saham tersebut akan menguat (melemah) pada perdagangan hari ini.



Macro Indicator

Inflation Rate YoY	: 3,65 %
Inflation Rate MoM	: 0,11 %
BI Rate	: 6,75 %
Fed Rate	: 0,25 %
Sibor (1M)	: 0,28 %
Jibor (1M)	: 7,07 %

World Major Index

Index	Level	Chg	(%)
IHSG	2.298.14	72.32	3.25%
Nikkei 225	10,165.21	51.97	0.51%
Hang Seng	20,234.08	98.58	0.49%
ST Times	2,636.19	32.13	1.23%
Dowjones	9,154.46	83.74	0.92%
S&P 500	986.75	11.60	1.19%
Nasdaq	1,984.30	16.54	0.84%

Source: Bloomberg, IQ Plus

Sectoral Index

Sector	Level	Chg	(%)
Agriculture	1,647.25	22.86	1.41%
Basic Industry	219.75	4.59	2.13%
Consumer Goods	599.53	13.43	2.29%
Finance	270.06	9.59	3.68%
Infrastructure	706.03	26.94	3.97%
Manufacture	444.00	10.84	2.50%
Mining	2,046.92	71.71	3.63%
Misc. Industry	487.28	14.77	3.13%
Cons & Pro	160.07	3.67	2.34%
Trade & Service	245.18	7.39	3.11%

Source: IQ Plus

Commodities Price

Commodities	Current	Chg	%
Nickel (\$/MT)	16.995	100,00	0,59
Tin (\$/MT)	14.029	-201,00	-1,41
Gold (\$/oz)	937,40	0,10	0,01
Oil (USD/brl)- Brent	69,67	-0,44	-0,63
Oil (USD/brl)- NYMEX	66,51	-0,43	0,65
CPO (MYR/Ton)	2.232	47,00	2,15

Source: NYMEX, London Metal Exchange, Bloomberg

Exchange Rate

IDR to	30/07/09	29/07/09
USD	9,950	9,950
EUR	14,009	14,068
GBP	16,415	16,288
AUD	8,189	8,161
YEN	104,68	104,99
SGD	6,893	6,904

Source: IQ Plus

Board	Volume	Value
Regular	9,140,138,500	6,641,737,344,000
Rights	1,271,666	485,546,450
Warrants	342,777,250	22,167,164,000
Market Total	9,808,814,769	7,013,315,705,050
Foreign Buy	1,103,341,600	1,962,662,414,000
Foreign Sell	441,120,100	825,329,462,500
Net Foreign Transaction	662,221,500	1,137,332,951,500

Last Updated : 30 Juli 2009 16:00:01

Source: www.e-bursa.com

Highlights News:

- **Output Industri Jepang Kembali Masuki Zona Positif**
- **Laba Bersih ASII Turun 10,75%**
- **UNVR Bukukan Penjualan Rp8,95 Triliun**
- **Laba Bersih ELTY Turun 21,2%**
- **Laba Bersih SMCB Semester I/2009 Turun 17,92%**

Output Industri Jepang Kembali Masuki Zona Positif

Output industri di Jepang pada kuartal II-2009 mengalami kenaikan sebesar 8,3%, peningkatan paling cepat dalam 56 tahun. Hasil ini membawa harapan di negara dengan perekonomian terbesar kedua di dunia itu untuk kembali tumbuh positif.

Laba Bersih ASII Turun 10,75%

PT Astra International Tbk membukukan pendapatan Rp44,76 triliun per Juni 2009, turun 3,25% dari periode yang sama tahun 2008. Beberapa bidang usaha mengalami penurunan profit, kecuali untuk bidang jasa keuangan, alat berat dan kontraktor penambangan. Dari penjualan sebesar di atas Astra meraih laba usaha Rp5,886 triliun, turun 10,96% dari laba usaha per Juni 2008 yang mencapai Rp6,611 triliun. Adapun laba bersih emiten beraset Rp83,225 triliun itu turun 10,75% menjadi Rp4,243 triliun (Rp1.048 per saham) dari Rp4.754 triliun (Rp1.174 per saham). -**ebursa**

UNVR Bukukan Penjualan Rp8,95 Triliun

Penjualan PT Unilever Indonesia Tbk mencapai Rp8,95 triliun pada semester I/2009, tumbuh 17,5% dibanding penjualan semester I/2008 sebesar Rp7,62 triliun. Penjualan dalam negeri menyumbang Rp8,66 triliun, sedangkan penjualan ekspor Rp296 miliar. Akan tetapi laba bersih perseroan hanya tumbuh 9,28% menjadi Rp1,49 triliun dari sebelumnya Rp1,37 triliun. Kenaikan laba perseroan juga ditunjang oleh keuntungan kurs sebesar Rp998 juta, dari sebelumnya rugi kurs Rp8,26 miliar. - **ebursa**

Laba Bersih ELTY Turun 21,2%

PT Bakrieland Development Tbk sampai akhir Juni 2009 membukukan keuntungan bersih Rp56,90 miliar, turun 21,2% dibandingkan periode yang sama tahun 2008 sejumlah Rp72,18 miliar. Penurunan tersebut disebabkan turunnya angka penjualan sebesar 8,9% dari Rp404,83 miliar menjadi Rp368,78 miliar. Laba kotor juga turun dari Rp197,06 miliar menjadi Rp180,12 miliar dan laba usaha tergerus menjadi Rp64,0 milyar dari Rp75,24 miliar. - **IF**

Laba Bersih SMCB Semester I/2009 Turun 17,92%

Laba bersih semester I 2009 Holcim Indonesia turun 17,92% menjadi Rp279,99 miliar dibanding periode sama tahun sebelumnya Rp341,14 miliar. Penjualan naik jadi Rp2,35 triliun dari Rp2,05 triliun dan laba usaha naik jadi Rp502,71 miliar dari Rp327,39 miliar. Namun beban lain-lain diderita Rp111,78 miliar dari pendapatan lain-lain Rp117,27 miliar sebelumnya menjadikan laba sebelum pajak turun jadi Rp390,92 miliar dari Rp444,67 miliar.


Top Gainers

Stock	Last Price	Chg	(%)
RICY	335	55	19.6
ELTY	360	45	14.3
GDYR	8,300	1000	13.7
MTDL	116	12	11.5
BTEK	69	7	11.3

Source: IQ plus
Top Losers

Stock	Last Price	Chg	(%)
BBLD	465	-155	-25.0
KIAS	150	-45	-23.1
EXCL	1,210	-290	-19.3
TRIM	225	-40	-15.094
BRNA	730	-120	-14.1

Source: IQ plus
Top Volume

Stock	Last Price	Chg	Volume (million)
BNBR	95	5	1,569.57
ELTY	360	45	921.23
BUMI	2,425	225	905.71
ENRG	360	20	639.66
BTEL	136	8	588.53

Source: IQ Plus
Top Active (Regular)

Stock	Last Price	Chg	Freq.
BUMI	2,425	225	18,326
ENRG	360	20	6,270
ELTY	360	45	5,732
BNBR	95	5	5,256
TMAS	345	30	4,791

Source: IQ Plus
Top Active (LQ-45)

Stock	Last Price	Chg	Freq.
LPKR	710	0	3,359
MEDC	3,275	100	2,940
MIRA	530	-10	2,619
BBNI	1,880	100	2,529
BMRI	3,925	225	2,445

Source: IQ Plus
Top Value

Stock	Last Price	Value (bio)	% of Total Market Cap
BUMI	2,425	2,102.99	2.6
ELTY	360	312.97	0.4
TLKM	9,400	284.07	10.5
BMRI	3,925	275.31	4.5
ENRG	360	223.92	0.3

Source: RTI, IQ Plus
Total Market Cap (Tr) 1,817.9
CALENDAR EVENT & CORPORATE ACTION
Shareholders Meeting Announcement

No	Code	Name	Type	Date	Time
1	TRUB	Truba Alam Manunggal E. Tbk	AEGM	31-07-2009	
3	ERTX	Eratex Djaja Tbk	AEGM	7/8/2009	10:00:00
5	RAJA	Rukun Raharja Tbk	EGM	11/8/2009	10:00:00
6	BNLI	Bank Permata Tbk	EGM	12/8/2009	15:00:00
7	HEXA	Hexindo Adiperkasa Tbk	EGM	19-08-2009	9:00:00
8	SMMT	Entertainment International Tbk	EGM	20-08-2009	10:00:00
9	AKSI	Asia Kapitalindo Securities Tb	EGM	26-08-2009	14:00:00
10	BNGA	Bank CIMB Niaga Tbk	EGM	27-08-2009	14:00:00
11	MYTX	Apac Citra Centertex Tbk	EGM	27-08-2009	10:00:00
12	SUGI	Sugl Samapersada Tbk	EGM	28-08-2009	10:00:00
13	INDR	Indorama Syntetics Tbk	EGM	28-08-2009	10:00:00
16	BACA	Bank Capital Indonesia Tbk	EGM	26-09-2009	16:00:00

Sumber : RTI
Dividend Announcement

Code	Name	Rp	Cum Date	Ex Date	Date Payable
JTPE	Jasuindo Tiga Perkasa Tbk	5	30-Sep-09	1-Oct-09	19-Oct-09
TALF	Tunas Alfin Tbk	4	27-Aug-09	28-Aug-09	15-Sep-09
HEXA	Hexindo Adiperkasa Tbk	23	23-Aug-09	24-Aug-09	10-Sep-09
MFIN	Mandala Multifinance Tbk	23.84	23-Aug-09	24-Aug-09	9-Sep-09
KREN	Kresna Graha Sekurindo Tbk	1	13-Aug-09	14-Aug-09	2-Sep-09
PANS	Panin Sekuritas Tbk	25	12-Aug-09	13-Aug-09	26-Aug-09
CLPI	Colorpak Indonesia Tbk	19.6	11-Aug-09	12-Aug-09	31-Aug-09
MICE	Multi Indocitra Tbk	20	9-Aug-09	10-Aug-09	27-Aug-09
OKAS	Ancora Indonesia Resources Tbk	4.75	9-Aug-09	10-Aug-09	27-Aug-09
PANR	Panorama Sentrawisata Tbk	0.42	6-Aug-09	7-Aug-09	26-Aug-09
MAIN	Malindo Feedmill Tbk	4	6-Aug-09	7-Aug-09	26-Aug-09
UNSP	Bakrie Sumatra Plantations Tbk	9	6-Aug-09	7-Aug-09	26-Aug-09
MEDC	Medco Energi International Tbk		5-Aug-09	6-Aug-09	21-Aug-09
INCI	Intanwijaya Internasional Tbk	10	5-Aug-09	6-Aug-09	25-Aug-09
WEHA	Panorama Transportasi Tbk	2.19	30-Jul-09	31-Jul-09	19-Aug-09
KLBF	Kalbe Farma Tbk	12.5	29-Jul-09	30-Jul-09	14-Aug-09
BRNA	Berlina Tbk	87	29-Jul-09	30-Jul-09	14-Aug-09
BUMI	Bumi Resources Tbk	50.6	29-Jul-09	30-Jul-09	18-Aug-09
DVLA	Darya-Varia Laboratoria Tbk	45	29-Jul-09	30-Jul-09	18-Aug-09
DGIK	Duta Graha Indah Tbk	2.2	27-Jul-09	28-Jul-09	12-Aug-09

Sumber : RTI



Research Team

Wahyu Mardi Widarini

Head Of Research (Mining)

wm_widarini@asiasecurities.co.id

Ext : 114

Supriyadi

Research Analyst (Banking & Property)

supriyadi@asiasecurities.co.id

Ext : 127

Bodi Gautama

Research Analyst (Infrastructure & Telecommunication)

bodi_gautama@asiasecurities.co.id

Ext : 116

Resty Febiyanti

Research Analyst (Consumer & Plantation)

resty_febiyanti@asiasecurities.co.id

Ext : 125

PT ASIA KAPITALINDO SECURITIES Tbk.

(Member of The Indonesia Stock Exchange)

**Menara Imperium, 12X Fl., Suite C,
Jl. H.R. Rasuna Said, Kav. 1A,
Jakarta 12980**

Indonesia

Phone : 62-21-835 4120

Fax : 62-21-835 4130

<http://www.asiasecurities.co.id>

DISCLAIMER

The information contained in this report has been taken from sources which we deem reliable. However, none of PT Asia Kapitalindo Securities Tbk and/or its affiliated companies and/or their respective employees and/or agents makes any representation or warranty (express or implied) or accepts any responsibility or liability as to, or in relation to, the accuracy or completeness of the information and opinions contained in this report or as to any information contained in this report or any other such information or opinions remaining unchanged after the issue thereof. We expressly disclaim any responsibility or liability (express or implied) of PT Asia Kapitalindo Securities Tbk, its affiliated companies and their respective employees and agents whatsoever and howsoever arising (including, without limitation for any claims, proceedings, action, suits, losses, expenses, damages or costs) which may be brought against or suffered by any person as a result of acting in reliance upon the whole or any part of the contents of this report and neither P.T. Asia Securities, its affiliated companies or their respective employees or agents accepts liability for any errors, omissions or misstatements, negligent or otherwise, in the report and any liability in respect of the report or any inaccuracy therein or omission there from which might otherwise arise is hereby expressly disclaimed. The information contained in this report is not to be taken as any recommendation made by PT Asia Kapitalindo Securities Tbk or any other person to enter into any agreement with regard to any investment mentioned in this document. This report is prepared for general circulation. It does not have regard to the specific person who may receive this report. In considering any investments you should make your own independent assessment and seek your own professional financial and legal advice.

©2008 PT Asia Kapitalindo Securities Tbk. All right reserved. This report may not be reproduced or redistributed, in whole or in part, without the written permission of Asia Securities and the firm accepts no liability whatsoever for the actions of third parties in this respect.